



**ALASKA DIVISION OF HOMELAND
SECURITY & EMERGENCY MANAGEMENT**

Daily Situation Report
25-276 October 3, 2025



Toll-Free 1.800.478.2337

Anchorage Area 907.428.7000

SEOC 907.428.7100

<u>SEOC Preparedness Level</u> Level 2 – Heightened Awareness	http://ready.alaska.gov	<u>Alaska Military Installation Force Protection Level:</u> FPCON Bravo
<u>NTAS Bulletin</u> The U.S. Department of Homeland Security issued updated National Terrorism Advisory Bulletin on June 22, 2025. https://www.dhs.gov/national-terrorism-advisory-system	<u>Maritime Security (MARSEC)</u> Level - 1 Minimum Appropriate Security Measures	

(Significant changes from previous situation reports are red.)

Significant Issues:

Elfin Cove:

High level collaboration between Forestry crews, DOT&PF, and Sea Level Transport LLC to remove debris, move lumber, and rebuild portions of damaged boardwalk. M/V Lite Weight with a high-capacity deck crane was utilized to move debris to a staging area awaiting transport to landfill. The DOT&PF crew has completed work and plans to demobilize today.

The Division of Forestry crew will remain onsite to continue debris removal from a crushed home and cover impacted residences with tarps.

DEC is engaged with the SEOC and the community to ensure environmental safety from fuel line compromise and drinking water safety in homes with water line compromise.

SEOC Div Sup remains onsite to coordinate resource requests for community needs.

Department of Health (DOH):

For resources and current information, see: <https://health.alaska.gov/en/>

Travel Alerts and Conditions:

No alerts at this time.

For current driving conditions, dial 511 or visit: <https://511.alaska.gov/>

Barry Arm Landslide / Tsunami Risk:

For the latest information on the Barry Arm Landslide and Tsunami risk, click here:

<https://dggs.alaska.gov/hazards/barry-arm-landslide.html>

Earthquakes:

United States Geological Service (USGS) Earthquake Information:

<https://www.usgs.gov/programs/earthquake-hazards>

National Tsunami Warning Center: <https://tsunami.gov/>

Alaska Volcanoes:

Great Sitkin Alert Level: **Watch** and Aviation Color Code: **Orange**

Shishaldin Alert Level: **Advisory** and Aviation Color Code: **Yellow**

For Alaska Volcano updates, go to: <https://www.avo.alaska.edu/>

Air Quality Index (AQI) Advisories: No active advisory/episodes

For the most up-to-date Air Quality Index Advisories:

<https://dec.alaska.gov/Applications/Air/airtoolsweb/Advisories>

Spills of Oil and Hazardous Substances:

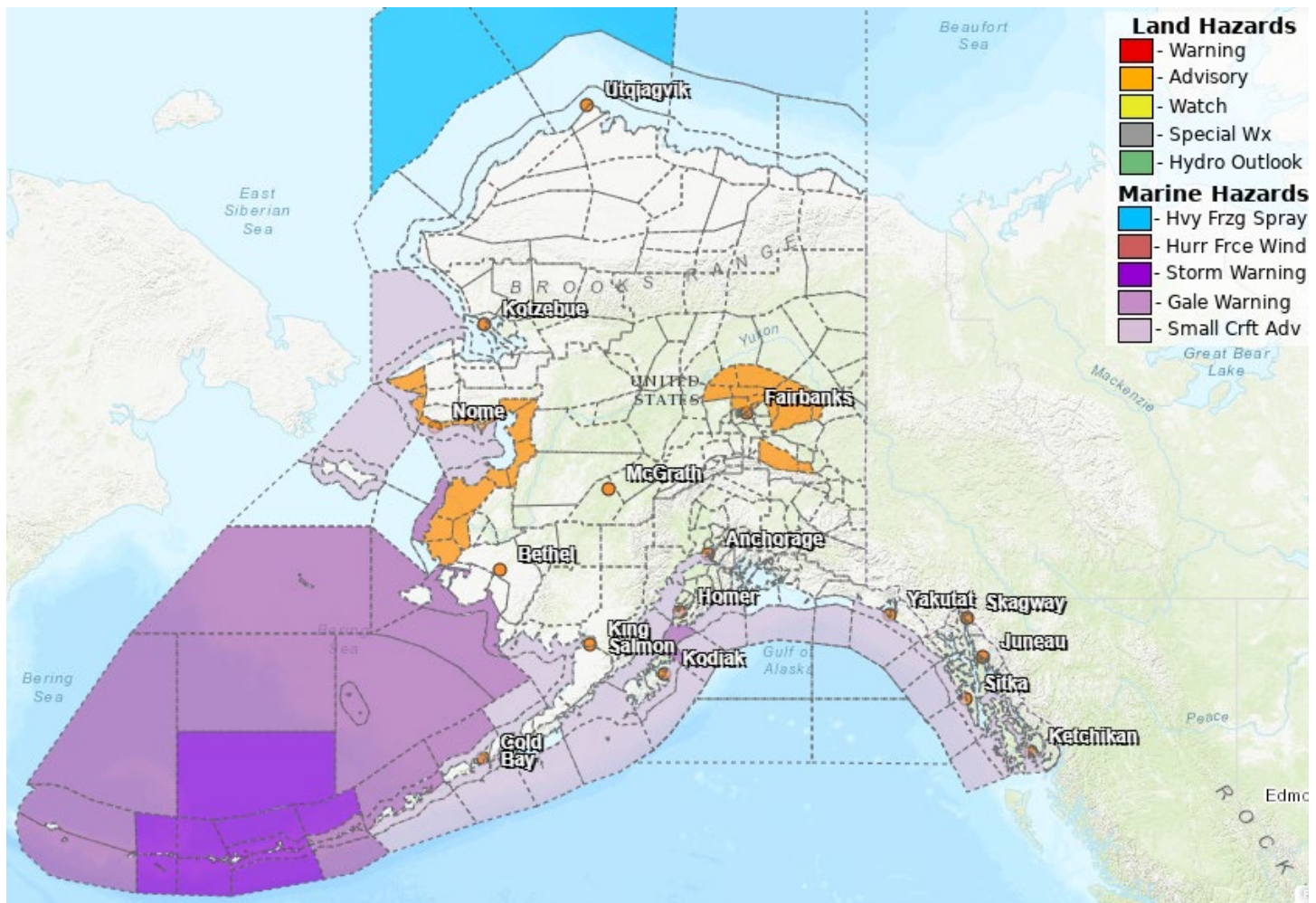
The Alaska Division of Environmental Conservation (ADEC) Spill Prevention and Response page is located at: <https://dec.alaska.gov/spar/ppr/spill-information/response/>

Alaska Cyber Security Information: No current published alerts notices

State Employees may sign up for cybersecurity notifications and alerts at:

<https://oit.alaska.gov/security>

Significant Weather:



Winter Weather Advisory - **White Mountains and High Terrain South of the Yukon River; Upper Chena River Valley; Chatanika River Valley**, in effect until 10PM this evening. Wet snow accumulations between 3 and 6 inches with winds gusting as high as 35 mph.

Wind Advisory - **Eastern Alaska Range North of Trims Camp**, in effect from 7AM Saturday to 4PM Sunday. South winds 30 to 40 mph with gust up to 55 mph.

High Surf Advisory - **Bering Strait Coast; Southern Seward Peninsula Coast; Eastern Norton Sound and Nulato Hills**, in effect from 4PM Friday to 4AM Sunday. Water levels 2 to 5 feet above the normal high tide line.

Coastal Flood Advisory – **Yukon Delta Coast**, in effect from 4PM this afternoon to 4AM Sunday. Water levels 2 to 4 feet higher than normal high tide line.

For more information, go to <https://weather.gov/arh>

The Next Situation Report will be on **October 6, 2025**. A significant change in situation or threat level will prompt an interim report. This report is posted on the internet at <https://ready.alaska.gov/sitrep>.

To register for email distribution, go to: <http://list.state.ak.us/mailman/listinfo/dhsem.situation.report>. Direct questions regarding this report to the SEOC at 907-428-7100 or seoc@alaska.gov.